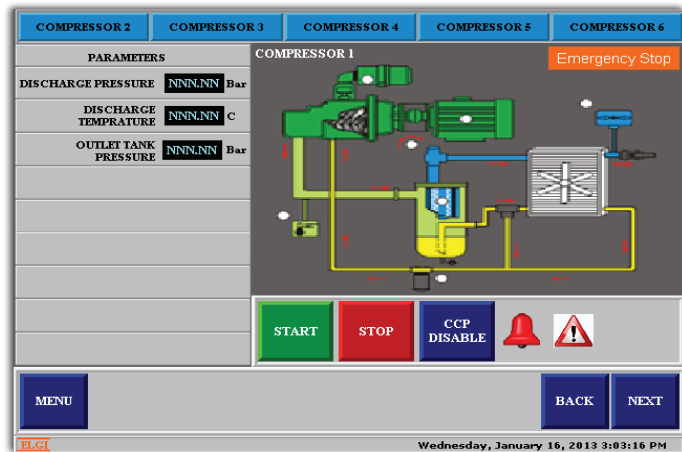


Common Control Panel for Air Compressor Systems

Features

- * To Implement a SCADA control system for a CCP
- * To Monitor the Compressor utilization, Switch OFF and ON the compressors based on plant requirement
- * To Communicate all information to DCS through ProfiBus DP
- * Capture vibration Monitoring system parameters and communicate to DCS



Specifications

PLC	Micro Logix ML1400 (1766L32BXB, 24VDC, 20KB RAM, RS232, RS485, EtherNet/IP, Modbus TCP/IP, DNP3 over IP)
Input	Digital 20 Nos Analog 4
Outputs	Digital 12 Nos
HMI	Panel View 6" Display
Networking	MODBUS RTU
Communication	ProfiBus DP
Panels	Rittal panel with IP 55
Compliance	IEC UL/CSA
SCADA	Factory Talk ME
Project Implemented	Power Plant in Maharastra
Duration of Project	15 Days
Scope of our Supply	Design, development, manufacture of Panels and Scada development and implementation

Applied Control Equipment Systems

S.F.No.415, Codissia Road, Opp.Geethanjali School,
Peelamedu, Coimbatore - 641 004.

Contact : +91 948 755 3082

E-Mail : appliedcontrol@gmail.com