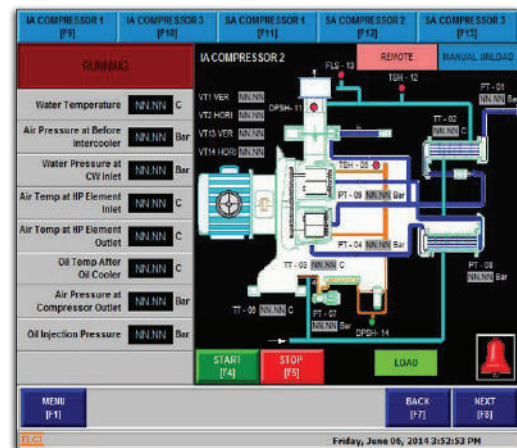


# Common Control Panel for Air Compressor Systems

## Features

- \* To Implement a SCADA control system for a CCP.
- \* To Monitor the Compressor utilization, Switch OFF and ON the compressors based on plant requirement.
- \* Time synchronization using Global positioning system.
- \* To Communicate all information to DCS through Ethernet TCP/IP.
- \* To Capture vibration Monitoring system parameters and communicate to DCS.



## Specifications

PLC	Control Logix L61 redundant system (1756-L61, 230VAC, 2MB, Remote I/O, EtherNet IP, ControlNet, DeviceNet )
Input	Digital 128 Nos Analog 12 Nos
Outputs	Digital Output 180 Nos
Networking	Control Net distributed IO modules network
Communication	Ethernet TCP/IP Fiber Optic communication established to interface DCS
Panels	Rittal panel with IP 55
Compliance	IEC UL/CSA
SCADA	Factory Talk - ME
Project Implemented	Infrastructure Power Plant Group in South India.
Duration of Project	One Month
Scope of our Supply	Design, Development, manufacture of Panels and SCADA development and implementation.

**Applied Control Equipment Systems**

S.F.No.415, Codissia Road, Opp.Geethanjali School,  
Peelamedu, Coimbatore - 641 004.

Contact : +91 948 755 3082

E-Mail : appliedcontrol@gmail.com