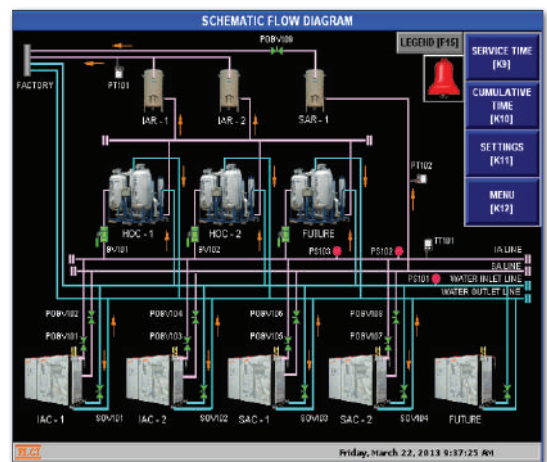


Common Control Panel for Air Compressor Systems

Features

- * To Implement a SCADA control system for a CCP.
- * To Monitor the Compressor utilization, Switch OFF and ON the compressors based on plant requirement.
- * Time synchronization using Global positioning system.
- * To Communicate all information to DCS through Ethernet TCP/IP.
- * To Capture vibration Monitoring system parameters and communicate to DCS.



Specifications

PLC	Control Logix L61 redundant system (1756-L61, 230VAC, 2MB, Remote I/O, EtherNet IP, ControlNet, DeviceNet)
Input	Digital 128 Nos Analog 12 Nos
HMI	Panel view 1000-10" display
Outputs	Digital Output 180 Nos
Networking	Ethernet distributed IO modules network
Communication	Ethernet TCP/IP
Panels	Rittal panel with IP 55
Compliance	IEC UL/CSA
SCADA	Factory Talk - ME
Project Implemented	Power Plant East India
Duration of Project	One Month
Scope of our Supply	Design, Development, manufacture of Panels and SCADA development and implementation.

Applied Control Equipment Systems

S.F.No.415, Codissia Road, Opp.Geethanjali School,
Peelamedu, Coimbatore - 641 004.

Contact : +91 948 755 3082

E-Mail : appliedcontrol@gmail.com