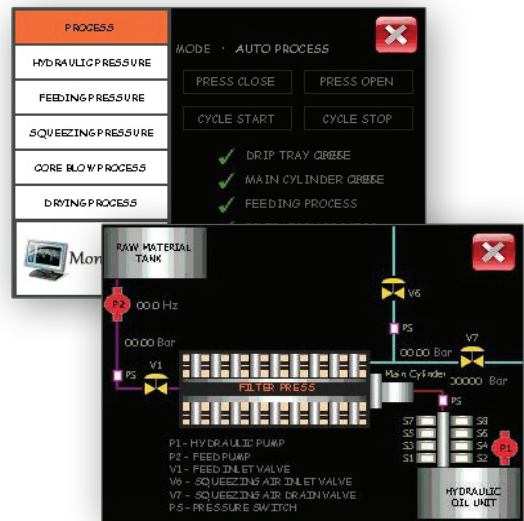


# Filter Press Automation Panel with Siemens PLC

## Features

- \* Filter press is a separation process, specially employed by solid/liquid separation using the principle of pressure drive, provided by a slurry pump. Filter press is a fixed volume and batch operation,
- \* The skeleton holds the filter pack together while pressure is being developed inside filter chamber.
- \* It consists of larger plates and frames filter presses with mechanical plate shifter.
- \* The function of the plate shifter is to move the plates and allow rapid discharge of the filter cakes accumulated in between the plates.
- \* The Process is fully automated and also manual operation feature has been provided.



## Specifications

PLC	SIEMENS 1200 ( CPU 1214C, 24 VDC, 50KB RAM )
HMI	SIEMENS KTP 600
Input	46 Nos
Analog Input	06 Nos
Outputs	26 Nos
Networking	ProfiNet
Communication	Modbus RTU
Panels	RITTAL with IP 55
Compliance	IEC, UL, CSA
Duration of Project	25 days
Scope of our Supply	Design, Development, manufacture of Panels and SCADA development and implementation

**Applied Control Equipment Systems**

S.F.No.415, Codissia Road, Opp.Geethanjali School,  
Peelamedu, Coimbatore - 641 004.

Contact : +91 948 755 3082

E-Mail : appliedcontrol@gmail.com