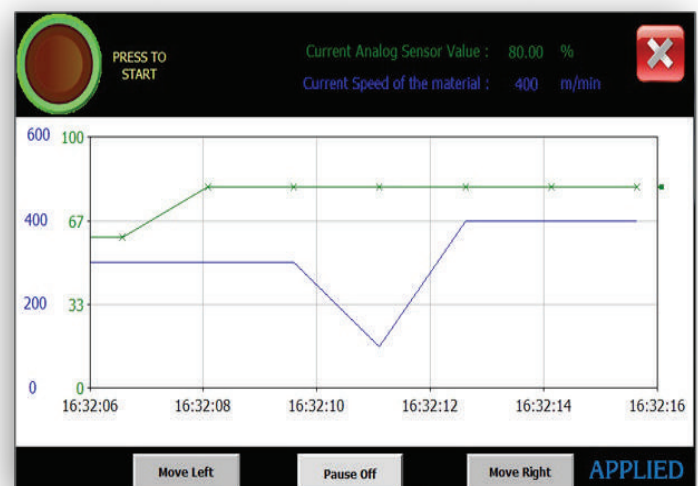


Quality Monitoring System for Textile

Features

- * The uniformity of yarn/sliver along the length is monitored by this system.
- * The system gets inputs, from the user through the HMI.
- * Also the deviation parameters are displayed in the HMI.
- * The user can monitor the yarn for 4 different lengths.
- * The CV% , U% , Number of Thin places per km, Number of Thick places per km and Number of Nep places per km will be displayed in the HMI.
- * The material can be monitored for up to 4 different sample lengths simultaneously.
- * It is possible for the sampling to be as close as about 10 mm at material speeds of around 600 m/min.
- * The monitored values are calculated all the time online for a sliding window of the length specified.
- * If the speed the material is less than 1 m/min, then monitoring process stops and will resume only if the speed of the material is greater than 1m/min .
- *The values are then displayed on the HMI.

ONLINE QUALITY MONITORING SYSTEM				
	#1	#2	#3	#4
Sample Length (mm)	1,000	2,000	3,000	4,000
No. of Samples	50	100	150	200
CV%	0.082	0.09	1.02	3.2
U%	0.21	1.67	2.5	0.0655
No. of Thick /km	560	720	900	448
No. of Thin /km	125	120	200	700
No. of NEP /km	236	600	220	100
Speed of Roller (RPM)	3,524			
Speed of the material (m/min)	675			



Specifications

PLC	Micro Logix ML1400 (1766L32BXB, 24VDC, 20KB RAM, RS232, RS485, EtherNet/IP, Modbus TCP/IP, DNP3 over IP)
Digital Input	2 Nos
Analog Input	4 Nos
Outputs	
Networking	Ethernet IP
Communication	Ethernet IP
Panels	RITTAL
Compliance	IEC, UL, CSA
SCADA	
Duration of Project	20 Days
Scope of our Supply	Design, Development, manufacture of Panels and SCADA development and implementation

Applied Control Equipment Systems

S.F.No.415, Codissia Road, Opp.Geethanjali School,
Peelamedu, Coimbatore - 641 004.
Contact : +91 948 755 3082
E-Mail : appliedcontrol@gmail.com