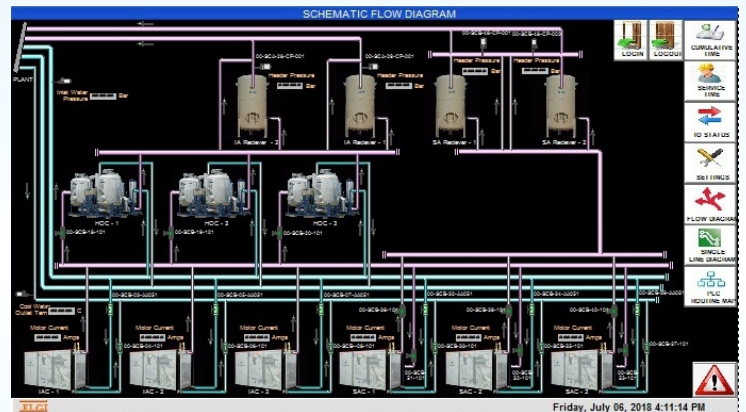
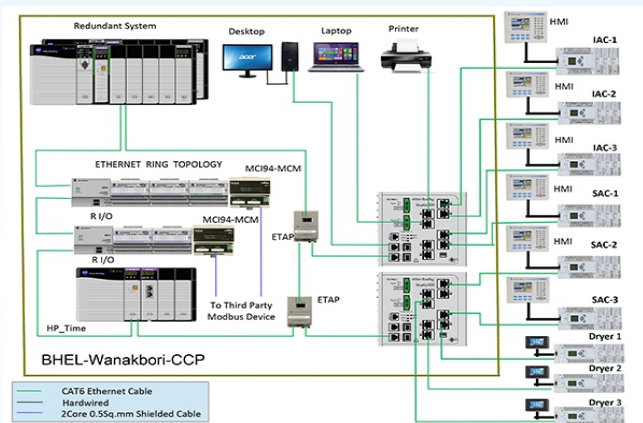


# Common Control Panel for Air Compressor System BHEL\_WANAKBORI

## Features

- To implement a SCADA controls system for a Common Control Panel
- To monitor the Compressor utilization and switch OFF and ON the compressor based on plant requirement.
- Time synchronization using global positioning system
- To communicate all information to DCS through redundant Modbus RTU
- Capture vibration Monitoring system parameters and communicate to DCS



## Specifications

PLC	Control Logix L71 redundant system (1756-L71, 230VAC, 2MB, Remote I/O, Ethernet IP, ControlNet, DeviceNet)
Digital Input	64 Nos
Analog Input	12 Nos
Outputs	64 Nos
Networking	Ethernet IP
Communication	Ethernet IP Fiber Optic communication established to interface DCS
Panels	Rittal panel with IP 55
Compliance	IEC/UL/CSA
SCADA	Factory Talk SE
Project Implemented	Gujarat
Duration of Project	One Month
Scope of our Supply	Design, Development, manufacture of Panels and